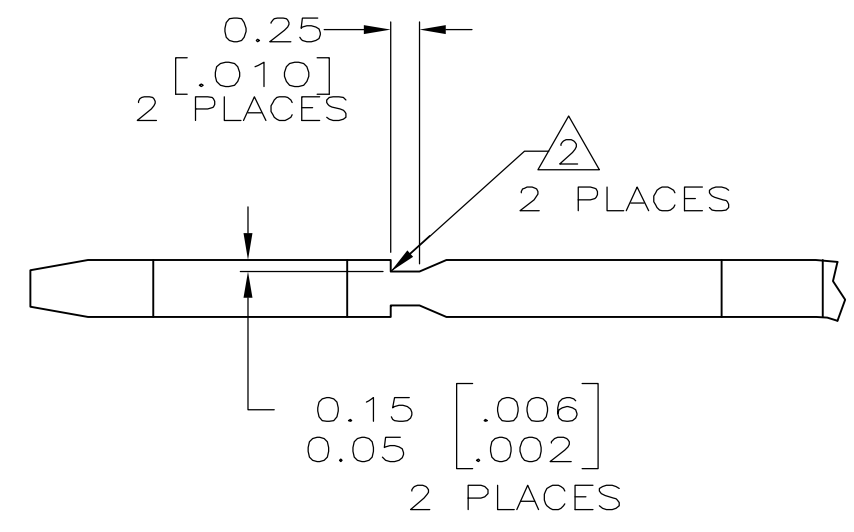
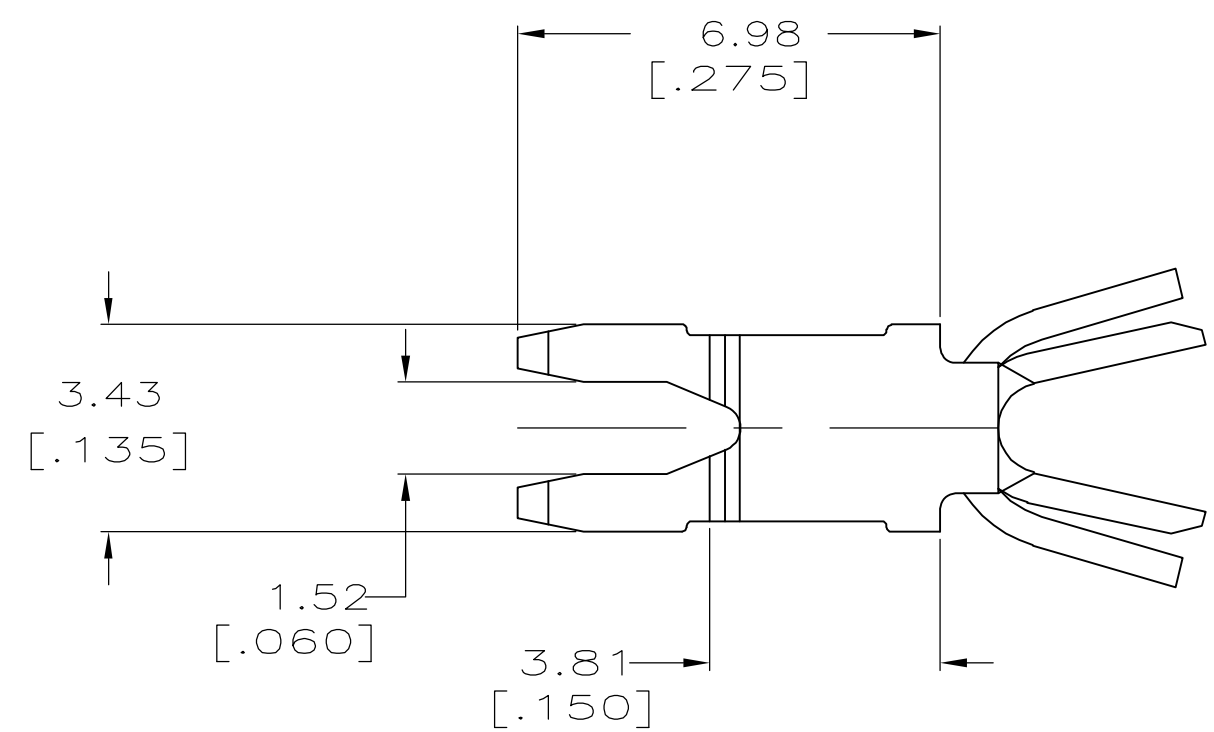


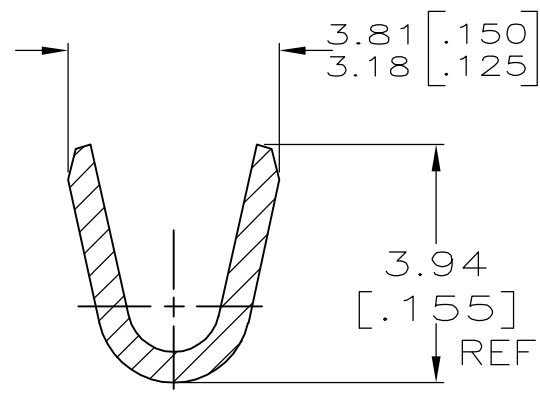
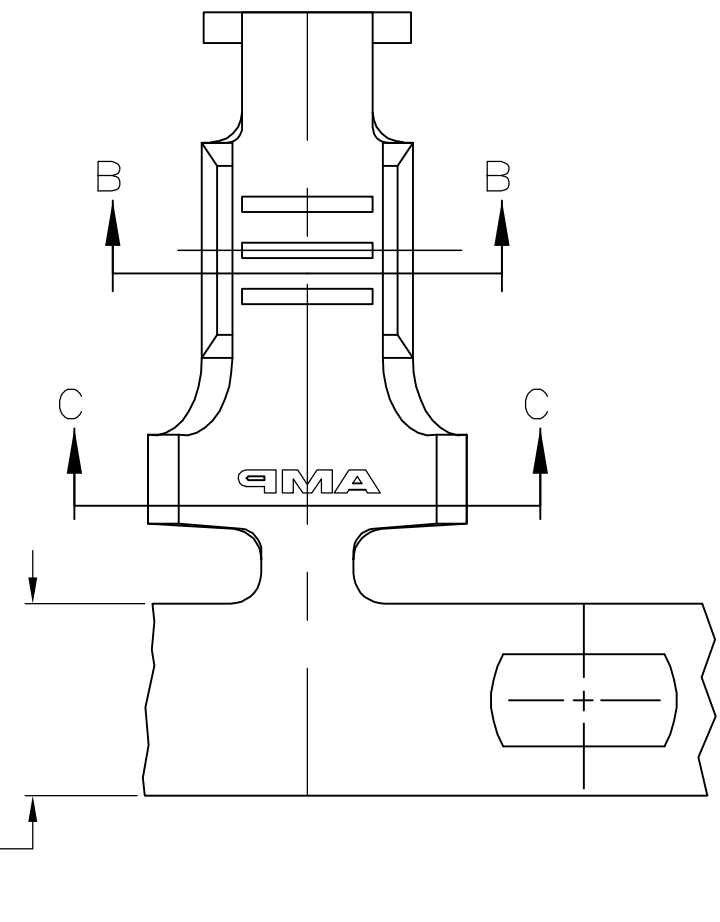
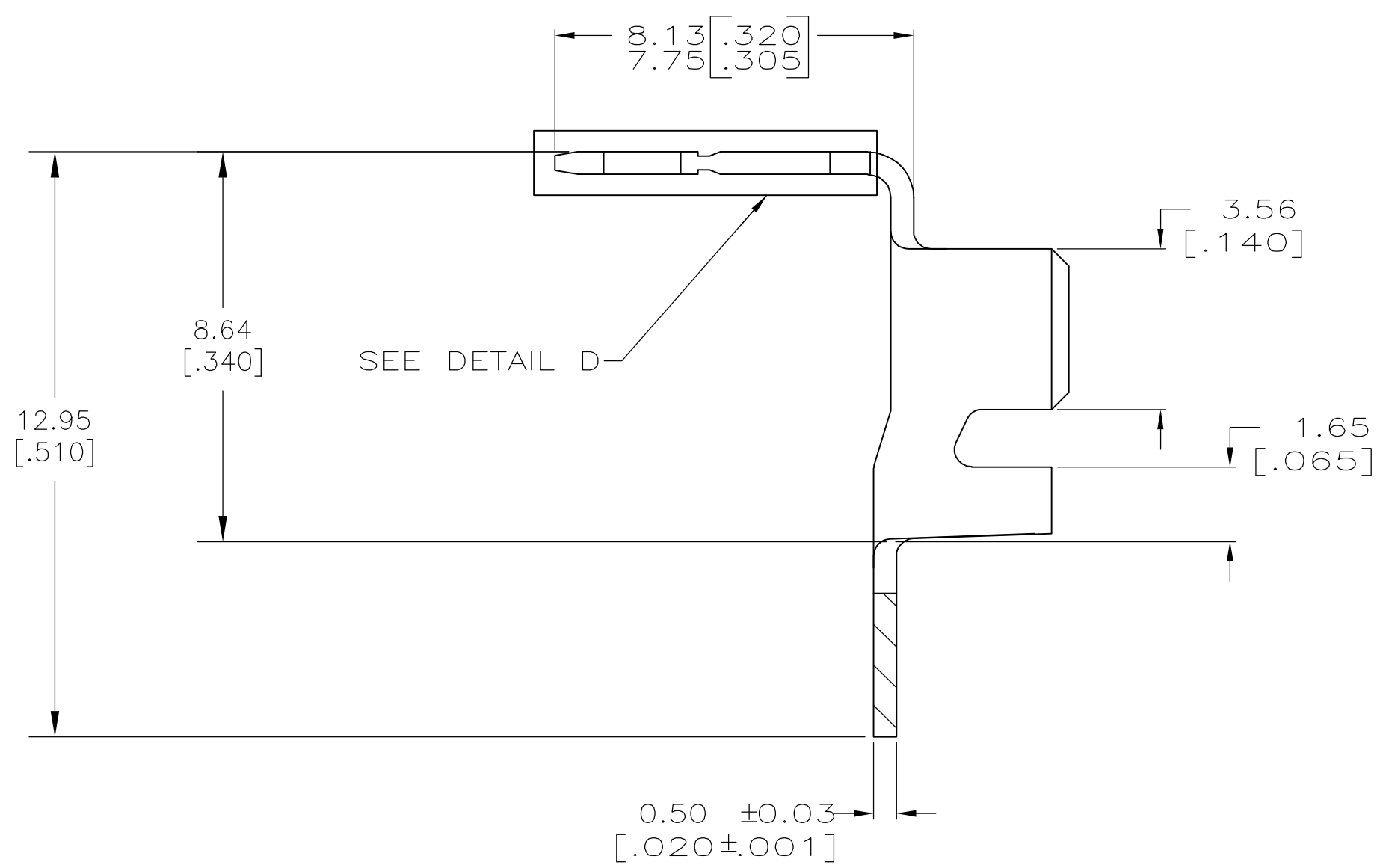
THIS DRAWING IS UNPUBLISHED. RELEASED FOR PUBLICATION
 © COPYRIGHT BY TYCO ELECTRONICS CORPORATION. ALL RIGHTS RESERVED.

LOC	DIST	REVISIONS			
P	LTR	DESCRIPTION	DATE	DWN	APVD
AF	50	J1	REVISED PER ECR-06-029896	03JAN07	MF KR

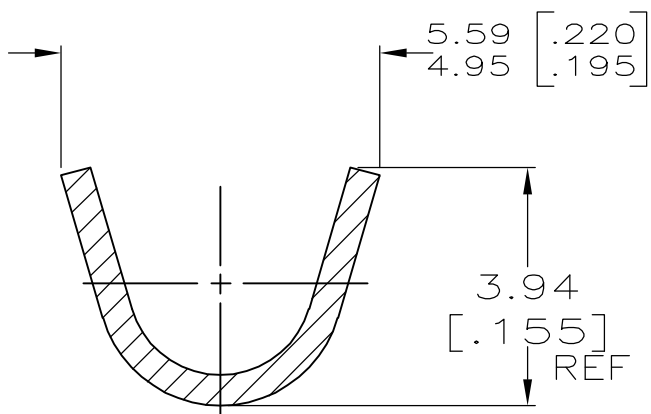


DETAIL D
 SCALE 15:1

1 CONTINUOUS STRIP ON REELS WITH TERMINALS LOCATED ON 9.14±0.08 [.36±0.003] CENTERS
 △ FOR OPTIMUM RETENTION IN POKE-IN TYPE MAG-MATE TERMINALS, THE SERRATION AS SHOWN MUST BE ENGAGED WITH THE EDGE OF THE LEAF



SECTION B-B



SECTION C-C

OBSOLETE	REVERSE	#18-#14 AWG	2.29-3.56 DIA [.090-.140]	63458-2
	STANDARD	#18-#14 AWG	2.29-3.56 DIA [.090-.140]	63458-1
	REELING	WIRE RANGE	INSULATION RANGE	PART NUMBER
THIS DRAWING IS A CONTROLLED DOCUMENT.		DWN MICHAEL S. FEHER 22DEC97 CHK RICHARD GRZYBOWSKI 20JAN98 APVD NELSON E. NEFF 21JAN98	Tyco Electronics Corporation Harrisburg, PA 17105-3608	
DIMENSIONS: INCHES	TOLERANCES UNLESS OTHERWISE SPECIFIED:	PRODUCT SPEC 108-22045	NAME TAB, POKE-IN, MAG-MATE™	
0 PLC ± -	1 PLC ± -	APPLICATION SPEC 114-2050	SIZE A2	CAGE CODE 00779
2 PLC ± 0.25[.010]	3 PLC ± -	WEIGHT -	DRAWING NO C=63458	RESTRICTED TO -
4 PLC ± -	ANGLES ± -	FINISH 0.000381 [.000015] MIN PRE-TIN PLATE	SCALE 8:1	SHEET 1 of 1
MATERIAL 082 BRASS		CUSTOMER DRAWING	REV J1	